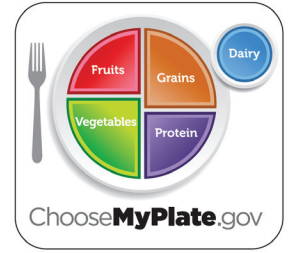


10 tips
Nutrition
Education Series

use SuperTracker your way



10 tips to get started

SuperTracker is an online tool where you can get a personalized nutrition and activity plan. Track what you eat and your activities to see how they stack up, and get tips and support to help you make healthy choices.

1 create a profile

Enter information about yourself on the **Create Profile** page to get a personal calorie limit and food plan; register to save your data and access it any time.



2 compare foods

Check out **Food-A-Pedia** to look up nutrition info for over 8,000 foods and compare foods side by side.

3 get your plan

View **My Plan** to see your daily food group targets—what and how much to eat within your calorie allowance.

4 track your foods and activities

Use **Food Tracker** and **Physical Activity Tracker** to search from a database of over 8,000 foods and nearly 800 physical activities to see how your daily choices stack up against your plan; save favorites and copy for easy entry.



5 build a combo

Try **My Combo** to link and save foods that you typically eat together, so you can add them to meals with one click.

6 run a report

Go to **My Reports** to measure progress; choose from six reports that range from a simple meal summary to an in-depth analysis of food group and nutrient intakes over time.



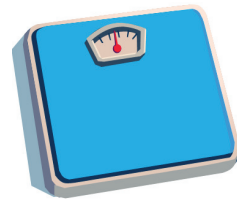
7 set a goal

Explore **My Top 5 Goals** to choose up to five personal goals that you want to achieve. Sign up for **My Coach Center** to get tips and support as you work toward your goals.



8 track your weight

Visit **My Weight Manager** to enter your weight and track progress over time; compare your weight history to trends in your calorie intake and physical activity.



9 record a journal entry

Use **My Journal** to record daily events; identify triggers that may be associated with changes in your health behaviors and weight.

10 refer a friend!

Tell your friends and family about **SuperTracker**; help them get started today.

This material was funded by USDA's Supplemental Nutrition Assistance Program-SNAP. The Supplemental Nutrition Assistance Program (SNAP) provides nutrition assistance to people with low income. It can help you buy nutritious foods for a better diet. To find out more, contact the Delaware Department of Social Services: 1-800-372-2022. This is an equal opportunity employer