

# HOPE STARTS HERE



palmetto processing solutions  
10000 Highway 90, #100  
Myrtle Beach, SC 29577



2023 ANNUAL REPORT

FROM THE  
PRESIDENT &  
CEO



Dear Friends,

As I look back on the past year, I feel an immense amount of gratitude, pride and hope. Despite challenges, our community has rallied around us to make sure our neighbors have the food and resources they need to thrive.

We are all feeling the effects of inflation. Over the past year, more families have needed our services, and our organization has spent more on food than ever before.

When the pandemic hit in March 2020, we made the important decision to stop charging our partner food closets for food. Many food banks in the Feeding America network have returned to passing along these expenses to partners; however, we are doing everything we can to not do this. Last fiscal year, we provided \$2.356 million worth of no-cost food to stock food pantries up and down the state.

In addition to providing the food our neighbors need today, we are also working to address root causes of food insecurity and provide pathways out of poverty. Your generosity has allowed us to implement programs and initiatives that go beyond addressing immediate needs, but also focus on sustainable solutions that break the cycle of poverty. From job training and employment initiatives to financial coaching, we are creating tangible pathways that lead individuals toward financial independence.

As we look ahead, we are thrilled to open the doors to our brand-new 70,000-square-foot facility in Milford. We will not only better serve residents of Kent and Sussex Counties, but our entire state. This building will help us change SO MANY more lives.

Despite continued challenges in our community, I am so optimistic for our future. Your continued support during these challenging times is crucial. The generosity of our community enables us to adapt, innovate and persevere in the face of economic adversity. Together, we can uplift our communities for a brighter tomorrow. I hope the stories included in this year's report inspire you as much as they inspire me.

Gratefully,



Cathy Kanefsky  
President and CEO





# OUR PROGRAMMING

Here at the Food Bank of Delaware, we say we provide Food for Today and Food For Tomorrow. Our programs focus on the immediate food needs of our neighbors, but also on economic mobility so neighbors can get to a place where they no longer need our services.

## *Food for Today*



**MOBILE PANTRY**



**SENIOR NUTRITION**



**BACKPACK PROGRAM**



**PARTNER FOOD PANTRIES**



**HOME DELIVERY**

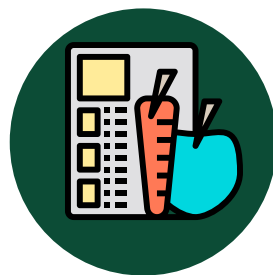


**HEALTHY PANTRY CENTER**

## *Food for Tomorrow*



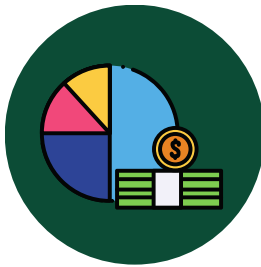
**SPECIALIZED TRAINING  
EMPLOYMENT PROGRAM**



**NUTRITION EDUCATION**



**TRAINING PROGRAMS**



**FINANCIAL COACHING**



**BENEFITS OUTREACH**

# A LOOK AT HOW THE FOOD BANK WORKS

## SUPPORTERS

VOLUNTEERS  
DONORS  
ADVOCATES  
FRIENDS



## OUR STATEWIDE OPERATIONS

NEWARK  
HEADQUARTERS

- 80,000-square-foot facility
- 5-acre farm



MILFORD  
BRANCH

- 70,000-square-foot facility opened in January 2024
- 3.5-acre garden

## FOOD FOR TODAY

PARTNER FOOD CLOSETS  
BACKPACK PROGRAM  
MOBILE PANTRIES  
FOOD FOR SENIORS  
HEALTHY PANTRY CENTER



## FOOD FOR TOMORROW

CULINARY/WAREHOUSE TRAINING  
NUTRITION EDUCATION  
BENEFITS OUTREACH  
STAND BY ME  
SPECIALIZED EMPLOYMENT  
TRAINING PROGRAM



## NEIGHBORS IN NEED

WORKING POOR \* ELDERLY \* SINGLE-PARENT FAMILIES \* CHILDREN \*  
ADULTS WITH DISABILITIES \* HOMELESS \* INDIVIDUALS WITH SUBSTANCE USE  
DISORDERS \* UNEMPLOYED \* UNDEREMPLOYED \* ADULTS WHO WERE  
PREVIOUSLY INCARCERATED \* ADULTS IN RECOVERY

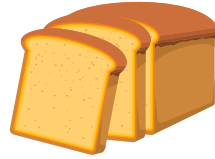


# FAST FACTS

July 1, 2022 - June 30, 2023



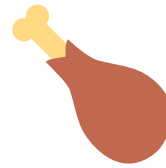
**16,597,175 pounds of food brought in**



**17,221,051 pounds of food distributed**



**3,619,934 pounds of produce distributed**



**3,010,509 pounds of meat distributed**



## Food distribution by county

10,015,944 pounds in New Castle County

3,998,079 pounds in Kent County

3,207,028 pounds in Sussex County

**1 in 9**

**Delawareans are food insecure.**

**1 in 7**

**children are food insecure.**



**18,603**  
volunteer visits

**55,105**  
hours donated  
*Equals 27 full-time staff members*

**8,404**

individual volunteers



**761**

**Partners**



278,963 backpack meal kits distributed



67,921 home deliveries made through Amazon and DoorDash



737 mobile pantries received 80,291 household visits



91 Delaware Food Works graduates



50,309 household visits at the on-site Healthy Pantry Centers



881 benefits applications submitted for Delawareans



# STATEMENT OF FINANCIAL ACTIVITIES

July 1, 2022 - June 30, 2023

## SUPPORT

Contributions	\$12,854,385
Contributions - Donated Product	\$16,201,539
Contributions - Capital Campaign	\$9,471,463
Fees and Grants from Government Agencies	\$2,400,335

---

<b>TOTAL PUBLIC SUPPORT</b>	<b>\$40,927,722</b>
-----------------------------	---------------------

## REVENUE

Food Sales	\$661,790
Interest Income	\$258
(Loss) on disposal of assets	\$(179,689)
Realized and Unrealized Gains	-
Miscellaneous	\$53,762

---

<b>TOTAL REVENUE</b>	<b>\$536,121</b>
----------------------	------------------

Net assets released from restriction	\$18,506,877
--------------------------------------	--------------

---

<b>TOTAL SUPPORT AND REVENUE</b>	<b>\$41,463,843</b>
----------------------------------	---------------------

## EXPENSES

Program Services	
Food Distribution	\$32,459,140
Community Development	\$1,915,774

---

<b>TOTAL PROGRAM SERVICES</b>	<b>\$34,374,914</b>
-------------------------------	---------------------

Support Services	
General and Administrative	\$622,174
Fund Raising	\$1,144,587

---

<b>TOTAL SUPPORT SERVICES</b>	<b>\$1,766,760</b>
-------------------------------	--------------------

---

<b>TOTAL EXPENSES</b>	<b>\$36,141,674</b>
-----------------------	---------------------

---

<b>CHANGE IN NET ASSETS</b>	<b>\$5,322,169</b>
-----------------------------	--------------------

<b>NET ASSETS - BEGINNING OF YEAR</b>	<b>\$41,248,674</b>
---------------------------------------	---------------------

<b>NET ASSETS - END OF YEAR</b>	<b>\$46,570,843</b>
---------------------------------	---------------------



# THE YEAR IN REVIEW



Thanks to your support, we can provide our neighbors with the resources they need for today, but also uplift and empower them for a better tomorrow.

Our community helped us impact so many lives over the past year. Some highlights include:

1. Building the new 70,000-square-foot Milford facility
2. Enhancing relationships with our Hunger-Relief Partners by continuing to provide no-cost food
3. Creating specialized training opportunities for Delawareans with disabilities
4. Helping Delawareans achieve economic mobility





September 2022-  
December 2023

# BUILDING HOPE IN MILFORD

2023 was spent raising the needed funds and building the new 70,000-square-foot Milford facility.

This new facility enables us to not only serve Kent and Sussex counties better, but our entire state. The building frees up capacity at the Newark warehouse, enabling us to bring in more statewide food donations.

In addition to enhancing our food distribution efforts, the new facility will finally give us the space in Kent and Sussex counties to offer more training programs and help residents find financial stability.

The new facility features:

- Expanded cold storage and warehouse space to distribute upwards of 3.7 million pounds of fresh foods and six million pounds of nonperishable food.
- A Healthy Pantry Center to directly serve those in need of food assistance. The pantry is set up like a mini grocery store so families can select the foods best suited for their households.
- A larger volunteer room where volunteers can sort and pack donations, create meal boxes and bags, and more.
- Classroom and hands-on training space for workforce development programs in culinary and warehousing/logistics.
- Space to plant a 3.5-acre garden to grow fresh foods for the community.
- An on-site café to provide employment opportunities to graduates of the culinary training program, while offering a place for members of the public to buy breakfast or lunch and gather as a community.





Ricky Lecates manages Blessings Unlimited Food Pantry in Millsboro

# BUILDING A STRONG NETWORK OF PARTNERS

In 2023, we distributed more than five million pounds of no-cost food to more than 208 agency partners throughout the state of Delaware.

Our vision is a community free from hunger, and we work to accomplish this by providing no-cost food and non-food products to qualified agencies throughout Delaware thanks to community support. Partner agencies connect the Food Bank of Delaware to food-insecure people in our community.

A strong network of community partners ensures that we can best meet the needs of our neighbors.

Our agencies operate different types of food programs including school food pantries, emergency food pantries, on-site meals, fresh produce distributions, and more.

In order to distribute food received from the Food Bank of Delaware, we seek partners who:

- Use donated product primarily for service to those experiencing food insecurity
- Offer the donated product free of charge and do not barter donated product for property, money or services.
- Adhere to food safety policies regarding the receipt, storage, and distribution of donated product.
- Maintain proper tracking information of people served and products distributed.

Ensuring these community organizations are well stocked helps reduce food insecurity in our state's most vulnerable communities.

***In 2023, we distributed more than five million pounds of no-cost food to more than 208 agency partners throughout the state of Delaware.***

# PARTNER SPOTLIGHT: ST. PATRICK'S CENTER

**“Demand is up 200% compared to this time last year.”**

St. Patrick's Center on 14th Street in Wilmington has been a community fixture for 50 years. Led by Executive Director Peter Slattery (pictured below), the center “transforms lives by building community, addressing poverty and restoring hope.”

This center takes a holistic approach to meeting the needs of community members. It offers hot breakfast, groceries, showers, laundry services and other social services to community members. An on-site social worker is also available to help with resource referrals, and a senior center provides entertainment and fellowship for area seniors. Busses, operated by the center and donated by DART, provide transportation to and from.

As a partner agency of the Food Bank of Delaware, St. Patrick's Center receives no-cost food to help meet the needs of the community. Hot breakfasts, a choice food pantry, a monthly Saturday fresh food distribution and a monthly senior meal box distribution are just some of the ways they serve our neighbors.

Slattery says that most of the center's visitors come from Wilmington's 19801 and 19802 zip codes. According to the State of Delaware's MyHealthy Community dashboard, more than a quarter of residents live below the poverty line.

Elizabeth Sanon (pictured below) is the Food Program Director for St. Patrick's Center and notes seeing increases in demand due to inflation and the end of pandemic-era emergency SNAP benefit allotments. “Demand is up 200% compared to this time last year,” she said.

To help meet these increased demands, the Center relies on community donations, volunteers, and a variety of food sources including regular fresh food donations from Trader Joes and Acme. Each week, 302 Food Rescue Crew members pick up from the Naamans Road Acme and deliver to the center. Providing fresh food is a priority for Peter and Elizabeth. Many of the center's visitors have difficulties accessing perishable foods due to cost.

Every weekday morning, a line forms outside the center as community members wait their turn for breakfast. In addition to breakfast, tables filled with nonperishable and perishable foods line the St. Patrick's church hall. Visitors can select the foods best suited for their households, and shelf-stable meal kits provided by the Food Bank are also a convenient option for the center's transient population. Peter and Elizabeth point out that community members can receive food assistance as often as they need it. Due to limited storage and small refrigeration spaces, many neighbors only take a few items at a time.

Last year, the organization provided more than 300,000 meals to neighbors in need, even with limited space. Currently, food for its distribution programs is stored on the second floor of the center and carted down via elevator each day. More cold storage space is also needed. The organization hopes a recent influx of \$600,000 from the American Rescue Plan Act's Capital Projects Fund will help increase efficiencies so the team can distribute even more food to the community.

“The resources and commitment we received from the Food Bank of Delaware enabled us to meet the increased need for food in Wilmington's East Side,” said Peter. “Together, we are serving a neighborhood with the highest food-insecurity in Delaware, making an impact on over 300 people a day.”







Raymond, a graduate of The Kitchen School, is employed at Grotto Pizza

# SPECIALIZED TRAINING OPPORTUNITIES

Here at the Food Bank of Delaware, we are committed to cultivating a workforce that fosters accessibility and inclusivity for all.

According to the USDA, in 2020 adults with disabilities experienced food insecurity at more than twice the rate of adults who were not disabled. The employment rate of people with disabilities is also much lower than that of those without disabilities.

The Bureau of Labor Statistics reported that in September 2022 the unemployment rate of people with disabilities ages 16-64 was 7.6 percent compared to 3.5 percent among those without disabilities.

Higher unemployment rates exist despite many people with disabilities having the ability and desire to obtain gainful employment. Many leave school without community-based vocational training that would prepare them for integrated competitive employment.

This is why we have developed training opportunities for people with disabilities through programs like The Kitchen School, S.T.E.P. – Specialized Training Employment Program, and a summer culinary exploration program for high school students.

## THE KITCHEN SCHOOL

A 12-week culinary training program tailored for adults with disabilities that includes professional guidance and career placement assistance from our Specialized Training Leads and Chef Instructors.

## SUMMER CULINARY EXPLORATION

A four-week summer exploration program for teens and young adults with disabilities.

## SPECIALIZED TRAINING EMPLOYMENT PROGRAM (S.T.E.P.)

Provides observation, oversight, and support to adults with disabilities who are employed within the Food Bank of Delaware.

**ADULTS WITH DISABILITIES EXPERIENCE FOOD INSECURITY AT TWICE THE RATE OF ADULTS WHO ARE NOT DISABLED.**

# KITCHEN SCHOOL GRAD DEFIES CHALLENGES: GOALS DRIVE PASSION TO SUCCEED

**“This is the first time I’ve been able to work in 11 years . . . 11 years. My bosses and the chefs are good here, and everyone is so nice. And the work here, everything is bearable for me. I can do it.”**

To say Janelle West enjoyed and appreciated her job as a prep cook at The Clubhouse at Baywood is an understatement. “I just love it here.” was her greeting.

West is a July graduate of The Kitchen School at the Food Bank of Delaware, a member of the inaugural class at the Milford facility. The Kitchen School is a 12-week culinary training program designed for adults with disabilities.

This Seaford resident and mom of three is aware that she doesn't look disabled, noting that she's all too familiar with that comment. “You just can't judge. I'm disabled,” she said.

“But I'm so happy to be here,” she said.

“This is the first time I’ve been able to work in 11 years . . . 11 years. My bosses and the chefs are good here, and everyone is so nice. And the work here, everything is bearable for me. I can do it.”

During an interview at her workplace, West pulls aside the neckline of her work t-shirt, pointing to the port surgically implanted in her upper right chest; it's been placed as the intravenous entry for TPN – or Total Parenteral Nutrition – providing nutrition and hydration. She requires weekly care at home from visiting nurses. “At night, I'm hooked up to a machine for 12 hours,” she added. “My nurses are proud of me.”

Now 36 years old, at age 26 West developed a life-threatening condition that required three back-to-back surgeries at Johns Hopkins Hospital in Baltimore, Md. where she spent 13 days. Her small bowel was removed, and she continues to live with small bowel syndrome; in fact, she was recently hospitalized nearly two weeks with related complications. “I was near death. I'm blessed to be alive. Don't say I'm lucky; I don't like that word. I'm blessed,” she said.

While doctors told her that she wouldn't be able to walk again or work or resume a normal life, she's proven them wrong. “This is my story. This is why I love to cook; I wasn't able to eat. I would take three little bites of a meatball and be full. Food is my passion. “

Although she's medically restricted to a 21-hour work week, she's in the kitchen for six hours a day, three days a week. “Janelle is always eager to learn and I've been lucky enough to watch her take the skills she's learned at the Food Bank and apply them to her position at Baywood. We're lucky to have her on our team,” said Executive Chef Brendan Tharp.

It's mutual respect and admiration. “I love it here working with everybody. We all get along, and we all work hard. We stay busy,” West said. She also praised the Food Bank's Kitchen School staff, noting they provide on-going support and connection.

Her Kitchen School training, in fact, was the first step. “I'm starting school to become a nutritionist. She's enrolled in Sussex Tech's Adult Education program, completing placement testing. “Back then, I was dealing with depression, and now I want to reach my goals. This is a major accomplishment for me. Some people would have given up, but I know everything that's happened to me was building me to be where I want to be.”

**To learn about The Kitchen School, visit [www.fbd.org/thekitchenschool](http://www.fbd.org/thekitchenschool).**

*As of printing, Janelle is working at the Food Bank as a Kitchen Steward.*







**Marilyn Ramirez, one of the Food Bank’s Stand By Me Coaches, visits a mobile pantry to distribute information about the Stand By Me program.**

# ECONOMIC MOBILITY THROUGH STAND BY ME

Thanks to a partnership with Stand By Me, a joint venture between the State of Delaware and United Way of Delaware, two financial coaches are housed at the Food Bank of Delaware to assist Delawareans improve their finances and meet goals.

The mission of Stand By Me is to provide Delawareans with a Personal Financial Coach and a toolkit to navigate the challenges leading to personal financial security.

Stand By Me offers free one-on-one support to Delawareans who want to understand more about their money, make good financial decisions, and have choices for savings and loans.

Food Bank Stand By Me financial coaches can help participants:

- Identify financial goals
- Map out a plan of action
- Create a working budget
- Develop new habits and break old ones
- Deal with collectors
- Eliminate debt

In 2023, Food Bank of Delaware coaches assisted 186 Delawareans take control of their finances and helped participants reduce debt by \$273,362 and save a total of \$455,380.

***In 2023, Food Bank of Delaware coaches assisted 186 Delawareans take control of their finances and helped participants reduce debt by \$273,362 and save a total of \$455,380.***

# STANDING THROUGH A STORM: WILMINGTON GRANDMOTHER ACHIEVES DREAM

**“She was able to see my strengths. She puts her own experience in it, and goes the extra mile until I started believing in myself.”**

Shirae is proud, confident, self-assured, and very happy! Why?

On May 22, she officially became a homeowner. That's a cause for celebration in anyone's life, but Shirae knows that for her, the journey is nothing short of a miracle. “I'm unemployed, and I'm disabled, but I did it! It's miraculous,” said this 51-year-old Wilmington resident. “It's so miraculous, and it's thanks to my financial coach, Marilyn.”

Marilyn is one of the Food Bank of Delaware's Stand By Me coaches, and for Shirae, Marilyn is more than a financial coach; she was a life coach. “I started with her in 2019, getting my budget together. She was able to see my strengths. She puts her own experience in it, and goes the extra mile until I started believing in myself,” said Shirae.

She explained that the process from dreaming of home ownership to reality was not without challenges. “I fell. I wasn't able to get a home,” she said. But with Marilyn's support, she applied again. “I got a \$150,000 loan. She advocates for you, and you have to learn to stand in a storm. Now, I'm helping myself . . . thanks to Marilyn.”

Shirae learned that Marilyn's support exceeded financial coaching. In fact, just when Shirae thought she'd met all the requirements, she faced another major setback. One loan officer told her she'd didn't qualify. Again, she reached out to Marilyn, who stepped in and helped her through the final challenge so the loan was approved. “She shows people who are feeling lost and displaced how to push back,” she said.

Marilyn said Shirae worked hard for what's she achieved. “She's disabled, and she wanted to purchase the home she was living in. She pleaded with the landlord, and she had enough savings. I'm happy for her. And she wants to continue working with me on doing her budget. It keeps her on track,” Marilyn noted.

Shirae also learned how to stay focused on her goals, despite obstacles. “I was under attack in relationships, but it was a test. I had health problems, and I fought to keep alive. I was headed for death, but I survived. I kept going, and I kept fighting. I came through a stronger human being. It wasn't easy. I attended homeowners' classes every month. I had to learn how to save, how to trust the system. All these people, they're your village, and I had to rely on trust to go through the purchasing process. But . . . I finally have a mortgage and I plan to advance my education. I'm a homeowner now, and that's a lot of responsibility,” Shirae said.





**Executive Committee**

Steve Thompson  
Board Chair  
Retired, Utility Executive

Andy Larmore  
Past Chair  
Bayshore Transportation

Andrew Levin  
Treasurer  
Onix Group

Cathy Sandler  
Secretary  
Retired, Bank Executive

Nicole DiMondi  
Workforce & Community  
Development Chair  
DuPont

Tucker Norton  
Operations Chair  
DuPont

Gregg Schmidt  
External Affairs Chair

Jeff Whitmarsh  
Development Chair  
Delaware State Police

**Board of Directors**

April Birmingham  
M&T Bank

Nikko Brady  
State of Delaware

Maurice Catlett  
SoDel Concepts

Nancy Dalton  
Amazon

Sarah DiLuzio  
DuPont

Bernice Edwards  
First State Community Action Agency

Dr. John Fink  
Bayhealth Medical Center

Jason Jowers, Esq.  
Bayard Firm

Leslie Kosek  
JPMorgan Chase

Scott Lammers  
Retired, Bank Executive

David Marvel, Jr.  
Fruit and Vegetable Growers  
Association of Delaware

Ruth Mayer  
Retired Educator

Henri Moore  
Haleon

Corie Priest  
Delaware Department of Justice

Bill See  
Perdue Farms

Cathy Kanefsky  
President and CEO

Larry Haas  
Chief Development Officer

Joy Hudson  
Vice President of Human Resources

Anna McDermott  
Chief Impact Officer

Chad Robinson  
Vice President of External Relations

John Snarsky  
Milford Operations Director

Eric Saul  
Chief Financial Officer

Kim Turner  
Vice President of Communications

Trevor Turner  
Chief Operating Officer



# SUPPORTING THE FIGHT AGAINST HUNGER

July 1, 2022 - June 30, 2023

## PRODUCT PARTNERS

### 100,000 - 500,000 POUNDS

Sam's Club	410,991
Food Lion	394,443
Trader Joe's	278,466
Target	278,098
Walmart	258,440
Sharing Excess	241,965
BJs Wholesale Club	232,461
Acme	214,656
Giant	212,343
Stamp Out Hunger Postal Food Drive	124,008
DOLE Fresh Fruit	110,663

### 50,000 - 99,999 POUNDS

Costco Wholesale	82,370
BNW Logistics	80,418
Redners	80,128
Perdue Farms	77,013
Aldi	64,740
Amazon	61,640

### 20,000 - 49,999 POUNDS

Red Lobster (PFG)	47,006
Performance Food Group	39,947
Chiquita Brands L.L.C.	39,387
Sprouts	36,549
United States Cold Storage, Inc	36,033
Burriss Logistics	33,884
Atlanta Community Food Bank	32,597
ShopRite	32,402
USA Fulfillment	31,609
America's Second Harvest South GA	31,315
Fifer Orchards	25,200





# FUNDING THE FIGHT AGAINST HUNGER

July 1, 2022 - June 30, 2023

## **Champion of Hope - \$100,000+**

Anonymous  
Bank of America  
Barclays  
Community Food Bank of NJ  
Corteva Agriscience  
Discover Bank  
Estate of Daniel McSweeney  
Feeding America  
Harry K Foundation  
Highmark Blue Cross Blue Shield Delaware  
Kent County Levy Court  
The Laffey-McHugh Foundation  
Longwood Foundation, Inc.  
State of Delaware Office of Controller General  
TD Bank Charitable Foundation  
Welfare Foundation, Inc.  
The Whiting-Turner Contracting Company  
The Wills Group, Inc.

## **Leader of Hope - \$50,000 - \$99,999**

The Acierno Family Foundation  
Albertsons Companies Foundation  
Amazon.com  
Anonymous  
Capital One Services, LLC  
DuPont  
Ellice and Rosa McDonald Foundation  
Food Lion Feeds Charitable Foundation, Inc.  
Ahold Delhaize USA Giant Food  
Ms. Katharine Gibson  
Incyte Corporation  
JPMorgan Chase  
The Susan and Dan Katzin Family Fund  
Ms. Elinor L. Knodel  
Our Family Foundation by Giant  
Palmer Home Incorporated  
Franklin P. and Arthur W. Perdue Foundation, Inc.  
Wakefern Food Corporation  
WSFS Cares Foundation

## **Nourisher of Hope - \$25,000 - \$49,999**

412 Food Rescue  
Albertsons Companies, Inc.  
Atlantis Fund  
Bank of America Charitable Gift Fund  
Mr. Connor Barwin  
Children & Families First  
Collins Charitable Foundation  
Comenity Bank  
Dr. Anna Marie D'Amico  
The Discover Brighter Futures Fund  
Dunkin' Joy In Childhood Foundation  
Enterprise Holdings Foundation  
The Happy Difference Foundation  
Horizon Farm Credit  
M&T Bank  
Masonic Charities of Delaware  
Ms. Ruth A. Mayer  
Rosemary & Ted Lassiter Foundation, Inc.  
Sixers Youth Foundation  
Mr. and Mrs. Kenneth W. Young

## **Cultivator of Hope - \$10,000-\$24,999**

1001 Mattlind Way, LLC  
Ahold Delhaize America  
Mr. Randy Anderson  
Anonymous  
Bank of America Client Foundation  
Benevity Causes  
The Boeing Company  
The Carolyn S. and Donald F.  
Obrecht Foundation  
Chesapeake Utilities Corporation  
COBANK, ACB  
The Concerned Physicians Fund  
CSP Family Foundation  
Delaware Orthopaedic Specialists  
Ms. Carol Denson  
Ms. Julianne Dugan  
Estate of Frances G. Bradley

The Estate of Rose Oakes  
Mr. and Mrs. Charles E. Falletta  
Drs. Eric and Kim Gallagher  
The Glore Fund  
Golo, LLC  
Mr. and Mrs. J. S. Grant  
Harrington Raceway and Casino  
Mr. William B. Herdle  
Mr. Jonathan D. Jaffe and  
Ms. Cindy S. Goldstein  
Jason and Randi Jowers  
Kerith Foundation  
Kraft Heinz  
Lassiter Foundation  
Ms. Harriet Mair  
Meta Platforms, Inc.  
Mr. and Mrs. Tucker Norton  
Mr. Austin Okie  
Elaine Poole  
PSX  
Ms. Denise T. Quigley-Taylor  
Red Clay Creek Presbyterian Church  
Ross Aronstam & Moritz, LLP  
Mrs. Arundhati G. Sankar  
Dr. Barbara L. Sheer  
Mr. and Mrs. Jeffrey Simpson  
Diana & Floyd Smith  
Sonecha Family Foundation  
The Hompe Foundation  
Tidewater Utilities, Inc.  
Tresco Foundation  
The Trust of Robert Clancy  
The Trust of Thomas Ingold  
The Tuttleman Foundation  
United Way of Delaware  
Verisign  
Mr. Lyle Wallig  
Walmart Foundation  
Water Doctors Int.  
Wawa  
Wegmans Food Markets, Inc.  
Wells Fargo Foundation  
Mr. G. Evans Witt and Ms. Amy Sabrin  
The Wright-Hager Foundation

**Gatherer of Hope - (\$5,000 - \$9,999)**

The Albertsons-Safeway Foundation  
Allan Myers

Mr. and Mrs. Charles L. Anderson  
Anonymous  
Mr. and Mrs. Robert S. Appleby  
Ms. Susan Baker  
Bayard, P.A.  
Ms. Denise J. Beck and Ms. Gayle Gibson  
Karl and Kristin Bennett  
Mr. and Mrs. Randall S. Best  
Mr. Gary Beste, Sr.  
Ms. Diana Blais  
Blanchard Family Foundation  
Blood Bank of Delmarva  
Bove & Hedrick  
Mr. Gregory Boyce  
C & S Wholesale Grocers  
Caliber Collision Centers Foundation  
Mr. and Mrs. Larry E. Cook  
Mr. and Mrs. Gerret Copeland  
Michael and Ann Coughlin  
Mr. and Mrs. Matthew S. Criscimagna  
Mr. Ravi Dattani  
Mr. and Mrs. Stephan C. De La Veaux  
Delaware Burger Battle  
Delaware Farm Bureau Foundation  
Delaware Grange Mutual  
Delaware Racing Association  
Dr. and Mrs. Phillip Dobson  
Doctors for Emergency Service, P.A.  
Mr. and Mrs. Paul & Pat Ehrler  
Ms. Leatrice Elliman  
Elsmere Bureau of Police Needy  
Family Fund  
Exelon Corporation  
Mr. Andrew E. Feiring  
Rebecca P. Fitton  
Mr. Joseph Francis  
Franklin Mint Federal Credit Union  
Foundation  
Lois and Brian Galinat  
Mr. Robert D. Gooderham and  
Ms. Eileen Maroney  
Ms. Kimberly S. Grim and Ms. Kelly Phillips  
Harris Teeter  
Mr. William Hartnett  
Denison and Wendy Hatch  
Dr. Evelyn Hayes  
Mr. and Mrs. Roger M. Holcomb  
Jake Hubik & Chuck Samaha



Mr. and Mrs. William Jaffee  
Jane M. Sheehan Charitable Foundation  
Jeffie's Choice Inc  
Joe and Judy DeStefano Family  
Foundation  
Ms. Cassandra Junk  
Mr. and Mrs. Carl Kanefsky  
Mr. and Mrs. Dan Kettler  
Mr. Jeffrey P. Knapp  
Mrs. Darlene Kolodi  
Sarah, Scott and Kendall Lammers  
Land O'Lakes, Inc. Foundation  
Mr. Scott Lanham  
Mr. and Mrs. Carl E. Leshock  
Macadoo Family Foundation, Inc.  
Marvin Family Foundation  
Master Interiors, Inc.  
Laura and Tim McCann  
Mrs. Jane E. McKinstry  
Ms. D. J. McQuaide  
Middletown Odessa Rotary Club Services  
Mr. Mark Mills  
Mr. and Mrs. David Mitchell  
Ms. Pauline Morgan  
Ms. Kirsten Mucha  
Ms. Kathy Neilson  
Ms. Cindy Nelson  
Newark Emergency Center, Inc.  
Newark New Century Club  
Thomas and Jennifer O'Brien  
Miss Anabel Panayotti  
Mr. and Mrs. James L. Patton, Jr.  
Ms. Alice D. Reilly  
The Rivendell Foundation, Inc.  
Mr. Frank J. Robb  
Mr. and Mrs. Kevin R. Shannon  
Mr. David Snyder  
Ms. Monica Taylor  
Steve & Shelly Thompson  
The TJX Foundation, Inc.  
Mrs. Diane Walls  
YourCause, LLC

**Gardener of Hope - (\$2,500 - \$4,999)**

A & F Machine  
ABHA Architects, Inc.  
Amerihealth Caritas Services LLC  
Mr. Henry Cole and

Mrs. B. Jennine Anderson  
Anonymous  
Bally's Dover Casino Resort  
Bank of America  
Mr. James Baran  
Bay Country Prof. Concrete, LLC  
Bay Line Construction  
Dr. & Mrs. Charles Bean  
Best Ace Hardware  
Bloom Energy  
BNY Mellon Community Partnership  
Mr. David Bower  
Ms. Elizabeth J. Bryson  
Mr. David Campbell  
Cape Henlopen Elks #2540  
The Colonial Dames of America Delaware  
Creative Concepts of Bethany, Inc.  
Mr. and Mrs. Michael D'Amore  
Mr. Thomas B. Davey  
Ms. Catherine Dean  
Mr. Maxwell Derby III  
Dermody Properties Foundation  
Ms. Margaret Derrickson  
Mr. Paul Dryden  
Ms. Marie Edwards  
Mr. Milton Eng  
Ms. Jane Evans  
Mr. and Mrs. Richard J. Facciolo  
Mr. and Mrs. David P. Fields  
Financial House, Inc.  
Mr. and Mrs. Peter J. Fitzpatrick  
Focus Multisports Club, Inc.  
Fouk Road Dental  
Mr. Philip Fred  
Mr. Richard Bender and Ms. Alison Frost  
Ms. Catherine Gelwicks  
General Mills Foundation  
Mrs. Lisa Gibbs  
Dr. and Mrs. James M. Gill  
Mr. and Mrs. Peter S. Gordon  
Ms. Paula Grant  
Mr. and Mr. Lawrence A. Hamermesh  
Hanby Elementary School  
Mr. and Mrs. John R. Hansen  
Mr. Paul T. Harrell Jr.  
Mr. and Mrs. Edwin J. Harron  
Ms. Cynthia Hay  
Hendrick Automotive Group

Hockessin United Method Church  
Mr. and Mrs. Chester D. Hollingsworth  
IBEW Local  
Immaculate Heart of Mary Outreach  
Mr. Donald W. Jardine  
Rev. Cheryl Jensen  
Mr. & Mrs. Scott Johnson  
Mr. and Mrs. Joseph R. Julian  
Ms. Patricia A. Kowinsky  
Mr. Peter Kurylak  
Mr. and Mrs. Hon Peng Philip Lau  
Mr. and Mrs. Daniel L. Laughman  
Mr. Joseph Magrogan  
The Martin Dealerships  
Mr. and Mrs. Eugene A. Mayhew  
Ms. Claire F. McElwee  
Dr. and Mrs. John Meakin  
Mr. and Mrs. Vincent Mileti  
Mrs. Janice Mink  
Mr. William C. Mitchell  
Ms. Claire Neilan  
New Castle County  
Nickle Electrical Companies, Inc.  
Ms. Ellen M. Nobles-Harris  
Nuclear Electric Insurance, Ltd.  
Mr. William A. Olsen  
On Your Toes  
Mr. Richard J. Oparowski  
Mr. and Mrs. James A. Perry  
Gary and Lear Pfeiffer  
Mr. & Mrs. Ed Powers  
Mr. and Mrs. Glenn T. Regan  
Richards Layton & Finger  
Mr. and Mrs. Jeffrey T. Rigg  
Ms. Judith E. Rosenstein  
Second Harvest Food Bank of Metrolina  
Seiberlich Family Foundation  
Peter and Karen Shannon  
Ms. Linda Shopa  
Shore United Bank  
Mrs. Sue Slachta  
Henry Smithies  
Mr. and Mrs. Michael Sosnoski  
State of Delaware  
Mr. and Mrs. John J. Stephens  
Sussex County Council  
Mr. Edward Taubert  
The Patocs Foundation

Ms. Mardi R. Thompson  
Mrs. Angela Tilton  
Tito's Handmade Vodka  
Mr. and Mrs. Jeffrey S. Townsend, Sr.  
Turner Construction Company  
Mr. Jason S. Tyler  
United Church DE  
United Medical, LLC  
USDA  
Mr. Steven Walczak  
J. Mack and Nancy Wathen  
Ms. Peggie Weader  
Mr. Gerald G. Weaver and  
Dr. Cynthia A. Heldt  
Wheeler Financial LLC  
Mr. Kurt Wibbens  
Mr. Joseph Wills  
Mr. and Mrs. Marcus D. Wilson  
Wilson Sonsini Goodrich & Rosati  
Foundation  
Mr. and Mrs. Terrence L. Wolf  
Mr. Edgar S. Woolard  
Mr. and Ms. Christian Wright  
Ms. Carol Yates  
Mr. and Mrs. John M. Zucaro

**Seed of Hope - (\$1,000 - \$2,499)**

AAA Club Alliance  
Mr. Joseph Abessinio  
Mr. David J. Adams  
Dr. & Mrs. Harvey Adams, Ph.D.  
Mr. Jerome Adams  
Mr. Steven Adams  
Mr. and Mrs. Douglas J. Adelman  
AIDS Delaware  
Albero, Kupferman & Associates, LLC  
All Saints' Church & St. George's Chapel  
Charles W. Allen & Linda SnyderAllen  
Alliance Data  
Mr. Bruce E. Allison  
Mr. and Mrs. James O. Altrichter  
AmazonSmile Foundation  
Ms. Deborah Andress  
Anonymous  
Applied Control Engineering  
Ms. Valerie Aptt  
Mrs. Janet H. Arenson  
Mr. and Mrs. Frank M. Armbrrecht, Jr.



Mr. Bradley Aronstam  
Artesian Water Company, Inc.  
Ashby & Geddes, P.A.  
Mr. and Mrs. Robert Ashworth  
Dr. Brian Ault  
Ms. Monica M. Ayres  
Ms. Ronet Bachman  
Ms. Lucinda Bailey  
Mr. and Mrs. Thomas H. Baker  
Baker Tilly  
Mr. and Mrs. Tom Barletta  
Mr. and Mrs. Robert C. Barnes  
Bascio Bros Italy LLC  
Ms. Donna Basette  
Mr. Sam Bayard  
Mr. and Mrs. Joseph Baynard  
Mr. Bradford A. Beebe  
Ms. Katie Bennett  
Ms. Juliet Bercaw  
Mrs. Belva J. Berry  
Ms. Rosemary Bianchini  
Mr. and Mrs. Paul A. Bielewicz, Jr.  
Mr. and Mrs. Robert H. Bigelow  
April and Jay Birmingham  
Dr. John J. Bisaha and  
    Ms. Katherine M. Stika  
Mr. & Mrs. Thomas W. Black  
Mr. and Mrs. Clinton J. Blackwell  
Mrs. Harriet Blake  
Ms. Karen M. Bloch  
Mr. Mace A. Bloom  
Ms. Carla Bloss  
Mr. Samuel Blumberg and  
    Mrs. Elizabeth Hembree  
Bob's Discount Furniture Charitable  
    Foundation  
David and Laura Bonner  
Mrs. Ellen Bossert  
Mr. and Mrs. Michael W. Bowers  
Mr. and Mrs. Michael J. Boyle  
Mr. Will Bradley  
Mr. David Brennan  
Mr. Martin Brett  
Mr. John S. Breuer, Jr.  
Ms. Margaret E. Briggs  
Ms. Adrian Broderick  
Ms. Margaretta Brokaw  
Ms. Sarah Bronson

Mr. and Mrs. S. D. Brookes  
Mrs. Kathleen M. Brown  
Ms. Mary A. Brown  
Matt and Beth Brown  
Mr. & Mrs. Nick & Barbara Brown  
Ms. Shura A. Brown  
Mr. Warren R. Brownell  
Mrs. Jules Brugel  
Mrs. Judith W. Brunner  
Bryan Realty Group LTD  
Mr. and Mrs. Jerry W. Buckworth  
Ms. Nancy M. Bull  
Ms. Marsha J. Burd  
Ms. Mary Burks  
Mr. and Mrs. Jack W. Burnam  
Mr. and Mrs. A. Hays Butler  
Ms. Jane Bye  
Mrs. Joan Byrne  
Mr. and Mrs. Duane M. Campfield  
Ms. Ellison M. Carey  
Mr. Anthony Caristo  
Dr. Peter Carson  
Mr. Anthony Carter  
Carter Family Fund  
Ms. Katharine Carter  
Mr. Robert W. Carter  
Mr. and Mrs. Vic V. Carter  
Mr. and Mrs. William R. Carty  
Caruso Homes, Inc.  
Catherine D. King &  
    E. Reese King Foundation Fund  
Mr. and Mrs. J. Richard Cerchio  
Mr. and Mrs. William Chaney  
Alex Chaplin and Melissa Johnson  
Ms. Pamela Chappell  
Ms. Aurelia Chaudhury  
Dr. Ray and Jane Cheek  
Chester Bethel United Methodist  
    Church  
Mr. and Mrs. Michael D. Chinski  
Mr. and Mrs. Jonathan A. Choa  
Mr. & Mrs. Richard Chocolate  
Ms. Beverly Ciamaricone  
Mr. and Mrs. Ronald C. Clapper  
Mr. Philip B. Clark  
Mr. Simon Clarke  
  
Mr. Timothy Clarke and

Ms. Jennifer Stant  
Mr. Kenneth Cleaver  
Mr. and Mrs. Kenneth L. Clifton  
Mr. and Mrs. James F. Cloonan  
Msgt. and Mrs. Francis V. Cloutier  
Ms. Rita Cohen  
Ms. Sandra R. Collier  
Ms. Irene L. Collins  
Commonwealth Trust Company  
Ms. Judith Condon  
Mr. and Mrs. Pat Confalone  
Mr. H Scott Connell  
Mr. Paul Conner  
Mrs. Joan Connolly  
Mr. Paul J. Contreri-Angrick  
Mr. and Mrs. James L. Cook  
Ms. Deanne Coolidge  
Lammot Copeland  
Dr. and Mrs. James D. Cosgrove  
Mr. and Mrs. Kenneth Countley  
Diana and Daniel Cowell  
Mr. and Mrs. James H. Cox  
Cozen O'Connor Foundation  
Mr. and Mrs. Daniel N. Crampton  
Ms. Paulette Criaris  
Mr. David S. Cristy  
Mr. and Mrs. John Cross  
Mr. and Mrs. Robert Crowe  
Mr. Eric S. Crozier  
Ms. Barbara Curtis  
Ms. Mary Katherine D'Addario  
DAG Enterprises, LLC  
Mr. Christopher Dann  
Ms. Linda A. Darr  
K. and Barbara Dastur  
Ms. Christine Davidson  
Ms. Claretta Davis  
Ms. Maureen Davis  
Ms. Susan Davis  
Mr. Jacques De Ramel  
Mr. Robert F. Dedinas  
Mr. and Mrs. Thomas M. Delaney  
Delaware Saengerbund  
Mr. Charles Delmar  
Ms. Marilyn I. Denn  
Eric Dennis  
Dental Benefit Management, Inc.  
Mr. Michael Diehl

Mr. and Mrs. Robert Diehl  
Dingle & Kane, P.A.  
Mr. Daniel S. Diorio  
Dogfish Head Beer and Benevolence  
Mr. and Mrs. Steven Dombchik  
Dr. and Mrs. Viroon Donavanik  
Rajesh Dondapati  
Mr. and Mrs. James M. Donnelly  
Mr. David Dotzert  
Mr. and Mrs. Christopher J. Dowd  
Mr. Martin Drinan  
Drip Cafe  
DSEA  
Ms. Sara Dubberly  
Ms. Mary F. Dugan  
Dr. Erwin Durchlaub  
Eagle One Federal Credit Union  
Mr. and Mrs. Kevin Earl  
Eastern States Construction Service, Inc.  
Mr. and Mrs. Duane E. Eaton  
Mr. Donald Eck  
Edgewell Personal Care/Playtex  
Denise Edmonds  
Drs. G. Mitchell and Loretta Edmondson  
Mr. John Edwards  
Mr. and Mrs. Jonathan Ellsworth  
Ms. Martha Elterich  
Ms. Priscilla Eshelman  
Ms. Carolyn A. Espy  
Estate of Elaine Markell  
Bruce and Dorothy Evans  
Ms. Sherri L. Evans-Stanton  
Ms. Karen Evenson  
Exelon  
Ms. Alice C. Fagans  
Mr. Saverio Falco and Ms. Cecelia Vore  
Mr. William B. Farnham and  
Ms. Karen Sperle  
Ms. Samantha Fasone  
Claude & Mary Faulkner  
Mr. William Feher  
Mrs. Elizabeth C. Feldman  
Mr. and Mrs. Robert S. Field  
Ms. Marlene Fierro  
Ms. Elaine Fike  
Mr. Darryl Fink and Ms. Michele Lynch  
Mr. Bruce Finkelstein and  
Ms. Eleanor Pollak

Mr. Lawrence Firment  
First & Central Presbyterian Church  
First Citizens Community Bank  
Ms. Linda J. Fischer  
Ms. Barbara L. Fishel  
Ms. Cecily Fisher  
Mrs. Anne Flett Giordano  
Mr. Nicholas Foery and Ms. Karen Nassau  
Ms. Mary N. Ford  
Ms. Margaret M. Fortuna  
Fox & Roach Charities  
Mr. Craig Fraser  
Frederica Spring Creek Lions Club  
Mr. and Mrs. Stephen F. Freebery  
Mr. Paul Freedenburg  
Mr. Louis Frontino  
Mr. Phillip R. Gallo  
Mr. Shawn A. Gannon  
Mrs. Marjorie G. Garbutt  
Mrs. Ann M. Gardner  
Mr. William H. Geddes  
Mr. Marty Geier  
Ms. Denise M. Geran  
Mr. and Mrs. Mark Gibson  
Mr. Stephen Gilbert Jr.  
Mr. Cameron Gilmore  
Ms. Linda Givens  
Col. Craig Glassner  
Mr. and Mrs. Mark Godfrey  
God's Grace Christian Fellowship  
Ms. Veronica Gomez-Lobo  
Mr. Tim Gorzynski  
Mrs. Martyanne Grabusky  
Grace United Methodist Church  
Mr. and Mrs. Michael Graves  
Mr. & Mrs. Mark and Jane Greenberg  
Dr. Alan S. Greenglass  
Mrs. Dana Greenwood  
Ms. Erin Gregg  
Samuel and Kathleen Griffin  
Mrs. Ellen F. Grillo  
Ms. Cecilia T. Guerrette and  
Ms. Donna C. Salek  
Mr. and Mrs. Stefan Gunther  
Mrs. Judith M. Gwaltney  
Rob and Woodley Habgood  
Ms. Catherine Halen  
Halloran Farkas + Kittila LLP

Mr. and Mrs. Steven K. Halstead  
Mrs. Betty M. Hamilton  
Ms. Anne L. Hampton  
Ms. Christina A. Hamrick  
Ms. Jennifer Han  
Mr. James Harden  
Ms. Suzanne C. Harper  
Mr. David S. Harrer  
Mr. and Mrs. John Harrington  
Mr. John Harrington  
Mr. Richard Harris  
Ms. Kathleen K. Hart  
Mark and Lilianne Hastings  
Mr. Chris J. Hatzenbeler  
Mr. John J. Havrilla  
Mr. Cornelius S. Hawk, Jr.  
Ms. Martina C. Hayward  
Jay and Maret Headley  
Ms. Cynthia Hedgman  
Ms. Carolyn S. Hedlund  
Mr. Robert Heffernan  
David and Susan Heffer  
Ms. Cynthia Heim  
Ms. Harriett E. Heinrichs  
Mrs. Emily Heisig  
Ms. Elisabeth Hellwege  
Mr. and Mrs. H. David Herman  
Ms. Elizabeth Higginbotham  
High's Of Baltimore, LLC  
Mr. and Mrs. Claire Hinckley  
Mr. Joachim Hirche  
Mr. Christopher Hoess  
Mrs. Margaret Holley  
Mr. William Holmes  
Hologic Charitable Fund  
Mr. and Mrs. Caleb W. Holyoke, Jr.  
Mr. Robert Hopson  
Mr. Peter A. Horthy  
Mr. Donald Houck, Jr.  
Mr. Brian Housler  
Mr. Ian Howie  
Mr. and Mrs. Yahuei Hua  
Hughes Family Fund  
Ms. Catherine Huidekoper  
Mr. and Ms. Timothy A. Hummel  
Mr. and Mrs. John C. Huntzinger, Jr.  
Mr. & Mrs. Mark & Karen Huston  
Ms. Donna Hutten



Mr. Bruce Hyams  
Immanuel On The Green  
Mr. Richard Ingram  
Innospec  
Invista Performance Materials, LLC  
Drs. Patrick S. Ireland  
Iron Hill Brewery  
Ms. Amanda Irwin  
Ms. Joanne Irwin  
Mr. and Mrs. Paul R. Jacobs  
Ms. Barbara M. James  
Mr. David Jamison  
Mr. and Mrs. Bob G. Jarvis  
Mr. and Mrs. Christophe Jauffret  
Mr. Dean W. Johnson  
Mr. and Mrs. Andrew M. Johnston  
Mr. and Mrs. Murray V. Johnston, III  
Mr. and Mrs. John A. Jordan  
Mr. Chris Jording  
Ms. Cynthia Kaiser  
Mr. and Mrs. David T. Kaplan  
Ms. Marcia Kasony  
Dr. and Mrs. Daniel J. Kasprzak  
Kats Meow  
Ms. Cheryl Katz  
KBR, Inc.  
Mr. Bruce A. Keller  
Mr. and Mrs. Gerard Kennealey  
Mr. and Mrs. Christopher J. Kerr  
Mr. and Mrs. Laszlo A. Keszler  
King Crop Insurance, Inc.  
Ms. Jackie King  
Mr. James B. King  
Dr. Katherine King  
Ms. Linda King  
Dr. and Ms. Anthony J. Kinney  
Ms. Susan Kittle  
Mr. and Mrs. Robert J. Klimm  
Mr. and Mrs. John W. Kling  
Mr. and Mrs. William Knego  
Mr. Peter Kolchin and Ms. Anne M. Boylan  
Mr. and Mrs. Kenneth J. Konesey  
Mrs. Leslie R. Kosek  
Ms. Joan Kosinski  
Ms. Linda Kovacevich  
KPMG U.S. Foundation, Inc.  
Mr. Robert L. Krafft  
Mr. and Mrs. John and Valerie Kratunis

Mary C. Kreidler  
Mr. Kenneth Kremer  
Mr. Gary Krieger  
Mr. Mark D. Kroto  
Mr. Wade Kuhlmann  
Mr. Jonathan Kuhn  
Jean and William Kutcher  
Mr. Paul Lagasse and Ms. Willa Wing  
Landmark Science & Engineering  
Mr. Michael Langager  
Mr. Matthew Lange  
Mr. Randall Larrimore and  
Mrs. Cathy Cutright  
Mr. and Mrs. Robert Laughman  
Ms. Deborah S. Layton  
Mr. and Mrs. Kevin and Joyce Leary  
Mr. Michael Quirk and Ms. Katherine Lee  
Ms. Valerie Lee  
Derek Lehane  
Dr. & Mrs. Harry Lehman, III  
Mr. Samuel Leone  
Leroy Betts Construction, Inc.  
Mr. Richard Leshner  
Ms. Hannah Leung  
Mr. and Mrs. David G. Levandoski  
Ms. Carol Levin  
Liberty Church  
Linda Kulin Charitable Foundation Inc.  
Mr. Daniel F. Lindley  
Mr. and Mrs. John Littell  
Mr. Harry Littleton  
Paul Lokie  
Paula and George Long  
Lord Baltimore Lions Charities, Inc.  
Mr. and Mrs. H. H. Lott, III  
Mr. Joseph L. Loughran Jr.  
Lower Brandywine Presbyterian Church  
Mr. and Mrs. Stanley F. Lucas  
Ms. Carol A. Lunn  
Mr. and Mrs. Donald G. MacKelcan  
Ms. Dorothy L. Mallozzi  
Mr. James Mandell  
Mrs. Sheila Mangan  
Mr. and Mrs. C. Fredric Mann  
Mr. and Mrs. Andrew T. Manus  
Mr. and Mrs. Charles Marginot  
Ms. Harriet Marisa  
Mrs. Beth Marshall

Dr. Abigail Martin  
Mr. Daniel J. Martin  
Ms. Kathleen Martin  
Mr. and Mrs. Peter F. Matarese  
Mr. and Mrs. Charles Mater  
Mrs. Christine L. Mattes  
Mr. and Mrs. Daniel D. Matthews  
Mr. Kenneth Maurer  
Mr. and Mrs. Chris Mauro  
Ms. Nancy S. Mayer  
McCabe Enterprises  
Ms. Polly G. McCarthy  
Ms. Pamela S. McCloskey  
Patricia McClure  
Mr. Kevin McCooley  
Mr. Patrick L. McCubbin  
Ms. Kathleen McDaniel  
McDaniel, Inc,  
John and Peggy McDevit  
Mr. & Mrs. Charles McDine  
Mr. Patrick McGuire  
Ms. Jill H. McKeown  
Mr. and Mrs. Ronald McKinney  
Mr. and Mrs. Frank McSweeney  
Mr. and Mrs. Daniel P. Meier  
Mr. and Mrs. V. J. Mercante  
Mr. and Mrs. Mark Merley  
Mr. Peter Michel  
Andy Miller  
Mr. Bruce Miller  
Dr. and Mrs. Freeman Miller  
Ms. Sharon Miller  
Mr. & Mrs. John Mings  
Mr. Frank Miranda  
Mr. Norman M. Monhait and  
Ms. Marcia S. Halperin  
Ms. Susan C. Moore  
Mr. Drexel D. Morgan II  
Ms. Theresa A. Morrin  
Ms. Kelly Morrissey  
Mrs. Laurel Morschhauser  
Ms. Margaret A. Morton  
Ms. Melanie Moser  
Mr. Jason Mullen  
Ms. Jennifer A. Mullen  
Mr. Andrew Mumford  
Mr. and Mrs. Larry E. Munson  
Murderkill Lions Club

NATCA Charitable Foundation  
  
National Association of Letter Carriers  
Branch No. 191  
Mr. Mark J. Nelson and Ms. Susan E. Groh  
Network To ENC's  
Ms. Beth Nevill  
New Castle County Board of Realtors  
Newark Community Cooperative, Inc.  
Ms. Holly Newell  
Neenah And William Newell  
Mr. and Mrs. John E. Newlin, III  
Mr. and Mrs. Gary Nichols  
Mr. James F. Nichols, Jr.  
Mr. Mark Nikolich  
Col. and Mrs. Ronald E. Nitzsche  
Nor'easter Foundation  
Ms. Debra W. Norman  
Ms. Gwendolyn North  
Mr. Jerry W. Northington and  
Ms. S. L. West  
Northrop Grumman Systems Corporation  
Dr. Dael Norwood  
Mrs. Mary O'Shea  
Ms. Dawn O'Connell  
Ms. Margaret S. Odiorne  
Ms. Pamela M. O'Hara  
Ms. Patricia A. Olesky  
Dr. Robert O'Neill  
Mrs. Maria Orourke  
Mr. and Mrs. Joseph D. Outlaw  
Dr. Janet P. Kramer  
Ms. Jane E. Palmer  
Pampered Chef  
Dr. and Mrs. Peter B. Panzer  
Dr. and Mrs. Thomas L. Pappenhagen  
Ms. Barbara Parey  
Ms. Francine M. Passerini  
Ms. Mary B. Patterson  
Mike Patterson  
Mrs. Lois A. Paul  
Pearls on Pages Ministries, Inc.  
Ms. Judy Pendleton  
Penske Truck Leasing Co., L.P.  
Mr. Frank Perko Jr.  
Mr. William J. Perlstein  
Mr. and Mrs. Norman Pernick  
Mr. Bruce Peterjohn

Mr. Eric S. Petersen  
Dr. and Mrs. Nicholas J. Petrelli  
Mrs. Shelly L. Phelps-Dillon  
Mr. Robert Pincus  
Mr. Charles Pohl  
Mr. and Mrs. David E. Poore, Jr.  
Mr. Doug Poplin  
Porsche Club of America  
Mr. Robert C. Porta  
Mr. David Porteous and Ms. Vicky Smith  
Mr. Jeffrey M. Porter and  
Ms. Rose Passarella  
Mr. and Mrs. David J. Potter  
Ms. Michelle A. Poulin  
Mr. James R. Pritchett  
Psychiatric Access for Center DE, P.A.  
Mr. Austin Publicover  
Mr. and Mrs. A. Michael Pusey  
Ms. Donna Pyne  
Mr. Roderic Quirk  
Mr. and Mrs. David R. Rager  
Mr. Thomas C. Rainer Jr.  
Mr. and Mrs. Michael Ramone  
Mr. David Ramsdell  
Mrs. Catherine A. Rash  
Mrs. Johanna R. Ray  
Mr. and Mrs. Brian J. Read  
Mr. and Mrs. Timothy Read  
Ms. Barbara Reed  
Reilly Productions  
Mr. Charles A. Reisdorf  
Mr. Martin Rendon  
Mrs. Kathleen Reynolds  
Mr. Joseph J. Rhoades  
Ridgeway Law Group, LLC  
Mrs. Carolyn S. Riecke  
Mr. and Mrs. Jim Riehl  
Mr. and Mrs. Matthew R. Rigby  
Mr. and Mrs. David B. Ripsom  
Mr. Michael E. Riska  
Mr. and Mrs. Frank R. Robertson  
Chad T. Robinson  
Mr. Stephen Roettger  
Mr. David B. Rogers  
Ms. Alice Roggie  
Blake and Mitzi Rohrbacher  
Ms. Amanda Roosevelt  
Mr. & Mrs. William Rose

Mr. George H. Rosenberg  
Melissa Rudy  
Mr. Joseph Rybicki  
Ms. Margaret Saenger  
Sallie Mae  
Ms. Catherine Sandler  
Ms. Doris S. Sandoval  
Mrs. Marcia Sarnecky  
Mr. and Mrs. James and Emily Savopoulos  
Mr. H. Sawyer  
Mr. and Mrs. David C. Saxton  
Schell Brothers, LLC  
Schmuck Nation  
Ms. Jessie Schol  
Mr. Eric Schrag  
Mr. James S. Schwaber  
Mr. and Mrs. Richard F. Schwer  
Seaside Amusement, Inc  
Mr. and Mrs. David L. Sechler  
Mr. and Mrs. David Selinger  
Mr. Troy Senter  
Mr. Adarshpal Sethi  
Dr. Brian Setzler  
Mr. Vijay Shankaran  
Mr. and Mrs. William J. Sharkey Jr.  
Mr. and Mrs. H. Rodney Sharp, III  
Shaw Family Foundation  
Ms. Susan Sheehan  
Mr. Stephen J. Sheehy  
Mr. Waheed Sheikh  
Mr. and Mrs. Henry T. Sherron, Jr.  
Mr. Adam D. Shilling  
Mr. William P. Short, Jr.  
Mr. Bret Shue  
Nancy and Stephen Silver  
Mr. Borah S. Simon  
Mr. Robert McKay and Ms. Paula Simon  
Mr. Michael Simpson  
Mr. and Mrs. Darshdeep Singh  
Ms. Mary Sipala  
SJS Designs  
Ms. Eve Slap  
Mr. & Mrs. Richard Slater  
Dr. and Mrs. Clifford O. Smith  
Ms. Kim Smith  
Mr. and Mrs. Tommy D. Smith  
Dr. Susan Snodgrass  
Mrs. Robbie Snowdon



Mr. & Mrs. Robert Socash  
Mr. and Mrs. Ronald Souder  
Dr. and Mrs. David Sowa, M.D.  
Mrs. Magee Spencer  
Mr. William Spenla  
Ms. Gail Spittler  
Ms. Ellen Spurrier  
SR. Leasing LLC  
Starbucks Foundation  
State Farm Mutual Automobile Insurance  
Company  
Steen, Waehler, & Schrider-Fox  
Ms. Kim Steininger  
Mr. Jay M. Stevens  
Ms. Zora R. Stevens  
Ms. Linda M. Steveskey  
Ms. Janet P. Stewart  
Ms. Kathleen Stewart  
Mr. Mark A. Stewart  
Mr. and Mrs. Donald W. Stitz  
Mr. Frank W. Stratton  
Dr. Bob Streckfuss  
Dr. John R. Stump  
Mr. John Suchanec and Ms. Reid  
Ms. Karen E. Surles  
Dr. & Mrs. Richard H. Sutor  
Mr. and Mrs. William Swain  
Swandeful Too LLC  
Ms. Lois Takara  
Mr. Troy Talbert  
Mrs. Gina Talwar  
Tandem Hosted Resources Inc.  
Edward and Judy Tarlov  
Ms. Amy Taylor  
Mr. Jeffrey Taylor  
Mr. John & Sandy Taylor  
Ms. Renee Taylor  
Master Shower Doors  
Mrs. Linda S. Taylor, TTEE  
Ms. Dorothy Teixeira  
Mrs. Barbara J. Thayer  
The Community Church of the  
Lord Jesus Christ  
Ms. Alice J. Thielemann  
Mr. & Mrs. Gary Thompson  
Mr. Kevin Thorsell  
Mr. and Mrs. F. G. Tigani  
Ms. Carolyn Timmons

Mr. Charles H. Toliver and  
Ms. Vera M. Holmes  
Ms. Andy Tong  
Ms. Amy Tonkin  
Ms. Sharon Torre  
George and Diane Trainor  
Ms. Ellen Treem  
Mr. and Mrs. Glenn A. Trombly  
Mr. Kevin Truono  
Mr. Gerald Tудay  
Mr. Carl A. Tull  
Mr. Oscar Turk, Jr.  
Mr. and Mrs. Jameson A. L. Tweedie  
Mr. Martin Valania  
Ms. Mary Valiante  
Mr. John D. Van Gorp  
Mr. Samuel Van Horne  
Mrs. Tracey Van Rees  
Mr. and Mrs. Frank W. Vandegriff, Jr.  
Mary VanderDussen  
Mr. Christopher Vanuga  
Mr. Steven Varnes  
Mr. and Mrs. Thomas C. Veale, Jr.  
Mr. Richard D. Venish  
Mrs. Angela Vest  
Mr. & Mrs. William J. Wade  
Mr. Scott Wagner  
Mr. and Mrs. Mark Walker  
Mr. and Mrs. David J. Wallan  
Ms. Cheryl Walls  
Mr. and Dr. Andrew Walpole  
Mr. Paul Walsh  
Mr. and Mrs. Robert L. Ward  
Ms. Joanne Warren  
Mr. Chris Warth  
Ms. Virginia Waters  
Mr. and Mrs. Donald A. Watson  
Ms. Joann S. Watson  
Mr. Ron Weber  
Ms. Julianne M. Weidman  
Mr. and Mrs. Kirk Weiland  
Ms. Kathleen West  
Westmont Associates, Inc.  
Mrs. Rosemarie White  
Whitehall Neck Sportsman Club  
Dr. Jermaine D. Whitman Smithe  
Ms. Alberta C. Whitney  
Whittaker Brothers, Inc.

Mr. Boyd Wicks Sr.  
Ms. Betty A. Wiggins  
Mr. & Mrs. Robert Willard  
Mr. Jeff Williams  
Mr. Kenneth Willis  
Mr. James R. Willson  
Wilmington Lodge 307  
Mr. John J. Winchester  
Mr. Francis L. Winslow  
Mr. Thomas C. Wise  
Dr. and Mrs. Dennis Witmer  
Mr. and Mrs. Robert S. Wojewodzki  
Mr. and Mrs. Michael S. Wolfe  
Mr. and Mrs. Michael Wood  
Mr. Henry Wright  
X3M Systems, LLC  
Miss Kyunghee Yang  
Mr. Brian Yanofchick  
Mrs. Patricia Yergey  
Mr. Martin Yerick  
Mrs. Mary L. Young  
Ms. Rebecca Young  
Zeta Mu Epsilon Sorority



## HELP US END HUNGER

Newark  
222 Lake Drive  
Newark, DE 19702  
(302) 292-1305

Milford  
102 Delaware Veterans Blvd.  
Milford, DE 19963  
(302) 424-3302

[www.fbd.org](http://www.fbd.org)

